



Dr. Lawrence and Barbara Stein  
Center for the Performing Arts

2026 - 2027

# PROGRAMMING SEASON

SPONSORSHIPS



Dr. Lawrence and Barbara Stein  
Center for the Performing Arts

Actors' Playhouse, a **501(c)(3) charitable non-profit** organization, is a Florida Cultural Presenting Organization and one of 12 major cultural institutions in Miami-Dade County.

The company celebrates its 39<sup>th</sup> season in 2025-2026 as the largest self-producing regional professional theatre in South Florida. In partnership with The City of Coral Gables, Actors' Playhouse has renovated the historic facility into a three-stage performing arts center, which helped to revitalize the downtown district. Investing in Actors' Playhouse allows us to continue to enrich the community with cultural programming that impacts and entertains over **150,000** theatre patrons every year. Community culture contributes over \$2 billion dollars to the economic prosperity of our community, and Actors' Playhouse is proud to play a role in its economic success. Actors' Playhouse accepts financial and in-kind contributions to support our programming and capital projects.

# PROGRAMS



# MAINSTAGE THEATRE

OUR NEW SEASON!



# MAINSTAGE THEATRE

## SPONSORSHIPS LEVELS

**Mainstage Production**

**Presenting Show Sponsorship**

**\$50,000**

**Major Show Sponsorship**

**\$25,000 Plays \$30,000 Musicals**

**Supporting Education Sponsorship**

**\$10,000-\$20,000**

Actors' Playhouse produces five exciting Mainstage productions every season featuring popular and award-winning musicals and plays. In an agreement with Actors' Equity Association New York, the union for professional stage actors, the company employs the highest caliber of New York and regional actors, stage management and designers. The company's artistic excellence has earned critical acclaim receiving 91 Carbonell Awards (the South Florida Tony Award). The 2026-2027 39<sup>th</sup> season will include the Broadway musicals **JEKYLL & HYDE**, **COME FROM AWAY**, and **ROCK OF AGES**, along with the new play **LUNAR ECLIPSE** and the popular contemporary musical **I LOVE YOU, YOU'RE PERFECT, NOW CHANGE**. Mainstage Major Show Sponsorship offers over \$300,000 of marketing value and season ticket benefits.

# THE CHILDREN'S THEATRE

NEW SEASON



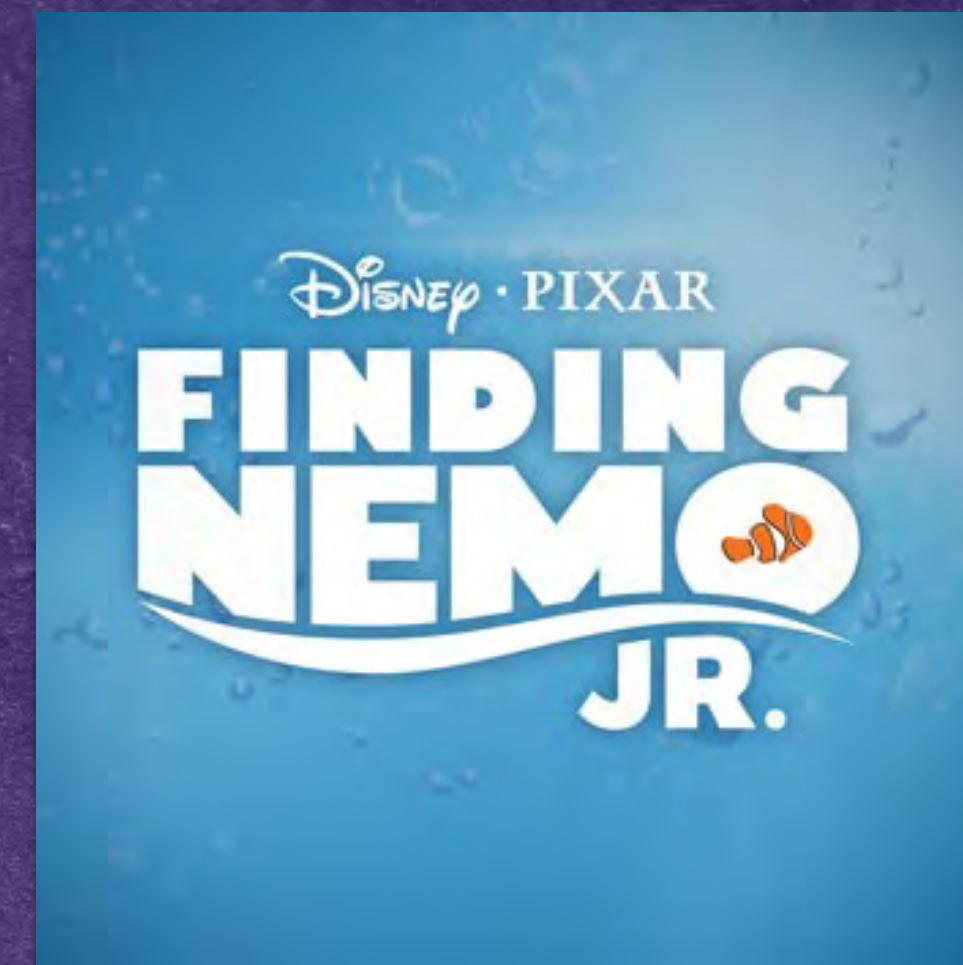
October 2 – 31, 2026



December 1 - 20, 2026



January 13 – February 27, 2027  
March 31-April 23, 2027



July 6-24, 2027

The Children's Theatre series features popular musical plays performed by professional adult actors, culturally enriching more than 60,000 children each year. The series features a free ticket program to underserved communities for over 7,000 youth to experience live theatre ON STAGE, many individuals for the first time. The new season will include exciting children's musical productions that are based on popular children's literature and meet the guidelines of Florida State Standards. Engaging children in the children's theatre program allows us to expose youth to story telling relatable to life's experiences, the understanding of social and moral issues, cultural awareness and differences, and a self-awareness of their own individuality and importance. Study guides and post-performance talk backs with the director and actors, enhance the experience. Sensory Friendly performances are available for all children's performances. The following musicals will be presented: **THE WIZARD OF OZ. A CHRISTMAS CAROL, THE MUSICAL, JUNIE B. JONES ESSENTIAL SURVIVAL to SCHOOL, and Disney and Pixar's FINDING NEMO.**

# CHILDREN'S THEATRE

## SPONSORSHIPS LEVELS

**Season Presenting Sponsorship**  
**\$25,000**

**Production Sponsorship**  
**\$5,000** (for the run of one production)

**Host 200 Youth to a student production**  
**\$6,000**

**Host 100 youth to a student production**  
**\$3,000**

Actors' Playhouse educational outreach includes partnerships with Miami-Dade County's extensive collection of public Schools, private schools, and home schools to provide educational resources for students and teachers. Resources include educator workshops, extensive study guides, theatre field trips, backstage dialogues with actors and other theatre professionals, and programs where theatre techniques are used to help children develop self-confidence, effective communications, and a better understanding of life's skills in general.

# EDUCATIONAL OUTREACH

Actors' Playhouse collaborates with over twenty community partners to actively engage youth in arts education and live theatre experiences at the Miracle Theatre. The organization proudly offers the following outreach programs:

- Musical Miracles Performance Youth Group: Comprised of a talented group of musical theatre youth who perform at community events and area social service agencies and hospitals
- Sensory Friendly Program: Presented under the umbrella of Miami-Dade County's "All Kids Included", this program invites children with autism and other sensory disorders and their families for weekday school matinees and special public weekend family performances for the Children's Theatre.
- Programs for at-risk students with special attention given to the middle school and high school students for Mainstage performances.
- Internship opportunities for students through our partnership with Miami Arts Studio, one of Miami-Dade County's performing arts institutions.

# EDUCATIONAL OUTREACH

## SPONSORSHIPS LEVELS

**Sponsor an intern for one year**  
**\$2,500**

**Sponsor 200 show tickets  
to a Mainstage production**  
**\$6,000**

**Sponsor Professional Master Classes  
at the school site**  
**\$5,000**

# ACTORS' PLAYHOUSE THEATRE CONSERVATORY

## SPONSORSHIPS LEVELS

### Scholarship Sponsorship

**\$1,500-\$2,000 / student**

The conservatory hosts year-round courses and workshops for children, teens, and adults in subjects such as acting, script writing, stage and camera techniques, film, speech, movement, and vocal techniques. Classes are affordable and limited in size to offer maximum development through a planned curriculum that will guide individuals through many years of training.

The popular summer programming for children and teens also includes an advanced musical theatre experience for talented youth, who audition to work in our summer professional musical and in their own Broadway Jr. production. Over 400 children participate annually in the Conservatory classes and spring and summer camps. Annual internships are offered in partnership with:

- Miami-Dade County Public Schools
- Miami Arts Studio
- New World School of the Arts
- University of Miami
- Florida International University

The 17th annual countywide **YTBD** talent contest for children is presented by The Children's Trust and will take place from April to May 2027. Participation is free and auditions are open to the Miami-Dade County community with over 500 children between the ages of 8 to 18, competing. Each year, finalists from each location move up to compete in the semi-finals, which take place at the Miracle Theatre. Once finalists advance to the finals, industry judges choose one winner in each category and one grand prize winner.

Winners receive **scholarship cash prizes, master classes from leading arts professionals, passes to arts venues and local attractions, and performance opportunities** in the community.

**Behind The Stage Door** is a new initiative for the talented **contestant winners to present motivating and programs in the community to libraries and hospitals.**

# YOUNG TALENT BIG DREAMS

## SPONSORSHIPS LEVELS

### Presenting Sponsorship

**\$55,000** Secured by The Children's Trust

### Scholarship & Program Sponsorships

**\$2,500-\$10,000**

### Behind The Stage Door Outreach

**\$5,000**

# THE MUSICAL MIRACLES

## SPONSORSHIPS LEVELS

### Scholarship Sponsorship

**\$2,000 / student**

Celebrating 32 years, The Musical Miracles are a group of talented youth who audition to be part of a year-round intensive musical training program under the direction of our Children's Theatre Director. Through this program they will gain experience developing careers in musical theatre, admittance into magnet schools, casting in television commercials, and as performers in productions demanding youth actors at Actors' Playhouse. This is a one-of-a-kind experience in regional theatre for young actors, and many of our alumni have developed prosperous careers on national tours and on Broadway.



Actors' Playhouse Reach for The Stars Gala Auction is the theatre's major fund-raising event and is considered the "signature event of the year!" Each year global and local companies support the auction by providing in-kind gifts and services and corporate VIP sponsorships. The event is catered by 32 restaurants with an open Bacardí bar.

# THE 36TH REACH FOR THE STARS GALA AUCTION

## SPONSORSHIPS LEVELS

### Presenting Sponsorship

**\$25,000** Secured by Bean Automotive Group,  
Lexus of Kendall

### VIP Cash Sponsorships

**\$1,000 - \$5,000**

### In-Kind Sponsorships Up To

**\$30,000**

# THE MIRACLE ON THE MILE ENDOWMENT CAMPAIGN

## SPONSORSHIPS LEVELS

**Our Legacy is Your Legacy.  
Become a member of the  
Society of Miracle Makers  
with a gift of \$50,000 or greater.**

Actors' Playhouse Florida State Endowment Account is an excellent way to secure the future of our cultural institution for perpetuity. The Florida State Cultural Endowment Grant Program of the Florida Department of Cultural Affairs will match funds with **\$240,000**. Endowment support can be provided in many ways including cash donations, securities, bonds, stock, property, and private wills. The Endowment account is managed by Coral Gables Trust.

**NAME DEDICATION** opportunities in the Miracle Theatre.  
**The HUB - the main lobby** dedicated as the essence and spirit of the theatre to inspiring thought, deepening self-awareness, and strengthening community connection.  
**The BALCONY THEATRE, the 300-seat intimate space for immersive theatrical experiences.**  
**The GRAND STAIRCASE**  
**The BLACK BOX THEATRE** a space where creativity begins and youth artistry reaches beyond boundaries.



# NAME YOUR SEAT!

Secure your place in history while investing in the economic vitality and cultural legacy of our community for generations to come. By naming a seat in the historic Miracle Theatre, you become part of a lasting tribute—one that supports the arts, strengthens local prosperity, and enriches lives well in-\$2,500to the future.

SEAT NAMING

**\$1,500**

# SPONSOR BENEFITS



# \$25,000

CORPORATE  
SPONSORSHIPS BENEFITS

- Ten (10) Season subscriptions to all five Gala Opening Nights with cast party and open bar (\$10,500 value)
- Ten (10) flexible tickets for each of the five Mainstage productions (\$4,650 value)
- Twenty (20) flexible tickets for the Children's Theatre season (\$900 value)
- Individual or business donor acknowledgment on the Lobby Donor Board, five Mainstage play programs, and on our website (Priceless)
- Gold VIP Sponsorship for the 36th Annual "Reach for the Star" Gala Auction (\$10,000 value) which includes: Twenty (20) Gala Auction Tickets, annual logo acknowledgment as a Gala Sponsor, and annual listing as a major donor in play programs and on the lobby donor board.
- Employee 50% Discount Offer to Mainstage Shows

**\$5,000**  
TO  
**\$10,000**  
CORPORATE  
SPONSORSHIPS BENEFITS

- Six (6) Season subscriptions to all five Gala Opening Nights with cast party and open bar (\$6,300 value)
- Twenty (20) flexible tickets good for the entire season to the performance of your choice (\$2,000)
- Twenty (20) flexible tickets for the Children's Theatre season (\$ 900 value)
- Gala Auction Sponsorship with 20 event tickets (\$5,000)
- Individual or business donor acknowledgment on the Lobby Donor Board, five Mainstage play programs, and on our website (Priceless)
- Underwriting Children's Theatre Performances
- Employee 50% Discount Offer to Mainstage Shows
- Invitations to special events all season

# \$2,500

Corporate SPONSORSHIPS  
BENEFITS

- Four (4) Season subscriptions to all five Gala Opening Nights with cast party and open bar (\$4,200)
- Four (4) Gala Auction tickets (\$1,000)
- Individual or business donor acknowledgment on the Lobby Donor Board, five Mainstage
- Invitations to special events all season

**THANK YOU!**





Dr. Lawrence and Barbara Stein  
Center for the Performing Arts

Founding Chairman of the Board, **Dr. Lawrence E. Stein**  
Founding Executive Producing Director, **Barbara S. Stein**  
Artistic Director, **David Arisco**  
Children's Director, **Earl Maulding**

280 Miracle Mile  
Coral Gables, Florida 33134  
**P. 305.444.9293**  
[www.actorsplayhouse.org](http://www.actorsplayhouse.org)

Please contact Executive Producing Director  
Barbara Stein for information  
**P. 305.444.9293.605 M. 305.332.5058**  
[bstein@actorsplayhouse.org](mailto:bstein@actorsplayhouse.org)

A 501c3 Non-Profit Charitable Organization